

LH-FL-RPT Series

User's Manual

Please read the instructions carefully before using.

Safety Warnings

1. Please use the device cautiously if you have the asthma or any allergy of Lung and skin. Do not aim the device directly at people, instead aim the nozzle at the floor.
2. Keep the device away from children and pets to avoid accidental spraying. Please don't stay in the smoke for a long time. It may make you uncomfortable if you inhale the smoke. If your eyes or skin have any kind of irritation reactions, please clean with soap water or see a doctor immediately.
3. Before installing or replacing cartridges, please disconnect the power supply. Please keep the device away from flammable and explosive materials. If you have any doubts about the installation, please contact the qualified professionals.
4. Do not expose the device on high temperature. Keep the device dry and clean. The device is for indoor use, and it's not water-proof. If water or other liquids enter the device, please disconnect the power immediately and consult the after-sales service team.
5. After triggering, the nozzle will be extremely hot. Please do not touch the device until it is completely cooling down to avoid burns.
6. This device can not be used in car.
7. The manufacturer is not responsible for any damage caused by incorrect installation and operation, and also not using the original replacement cartridges.

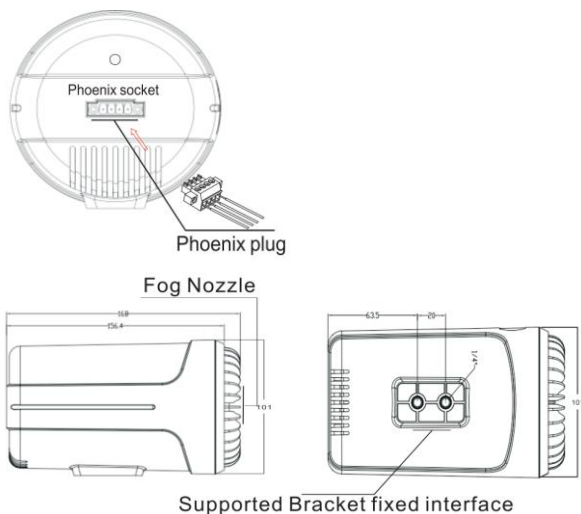
Contents

What's in box.....	1
Model Features & Specifications.....	2
Installation & Operations.....	3
LH-FL-RPT.....	4
Test Before Replace the Fog Cartridge...9	

What's in box

1. Security Fog Generator*1
2. Power Adapter*1
3. Remote Control*1(only for L H -FL-R/RPT)
4. Supported Bracket*1 and tool & screws*1set
5. Phoenix Plug*1
6. User Manual*1

Physical Casing



Model Features & Specifications

Model No.	Trigger Methods	Remark
HAM-FL-RPT	Panic Button & On-off Switch, RF remote control, and Tuya SMART LIFE mobile App.	One time ejection, then need to refill with new smoke container.
Fog type	Solid, Non-toxic smoke.	
Fog coverage	100-150m ³ (installation height 2.5-3 meters) enclosed or semi-enclosed area).	
Fog features	Cold smoke ejection in 1 second, protect critical areas in 3 seconds, cover the protected area in 8 seconds.	
Power supply	DC 12V/3A	
Power Consumption	0 ~ 24W	
Working Temperature	-10°C ~ 50°C	
Working	0 ~ 60%	

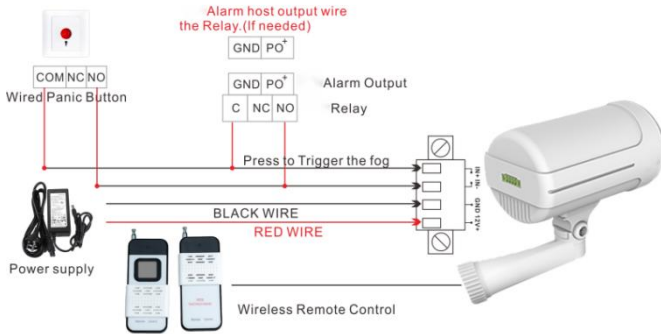
Humidity	
Installation Method	Wall/Ceiling mount
Smoke Duration	30~45minutes
Certification	CE, ISO9001

Installation & Operations

Precautions:

1. The recommended installation height for optimal smoke performance is 2.5-3meters.
2. Make sure the product is securely fixed on the supported bracket before connecting it to the control switch.
3. Please do not power on the device and ensure that the control switch is in the off-state until the installation and debugging process is completed.
4. Please do not touch the physical casing or nozzle immediately after the smoke triggered prevent severe burns.
5. Before replacing the smoke cartridge, you must first check whether the equipment is functional, then replace it to avoid false triggering.

WIRING DIAGRAM



Model No: L H -FL-RPT

HOW TO INSTALL

1. Wire connecting process is same as L H -FL-Z.
2. The device has a pairing time of 60 seconds after each power on. During this period, smoke cannot be triggered.
3. After 60 seconds of power on, close the switch signal or press the Remote control for more than 2 seconds to trigger the smoke. Alternatively if you have paired the device with TUYA app, you can use the TUYA app to trigger the smoke.

HOW TO PAIR THE DEVICE ON MOBILE APP

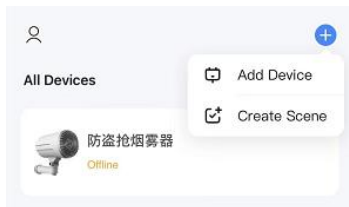
- 1) After power on (within 60 seconds pairing time period), press the RF remote control for 3 times (1sec interval), then (on the control board) green light is flashing, the Tuya module pairing state is activated.
- 2) Scan the below QR code or search in the App store to download the SAMRT LIFE APP. Follow the app instructions to register an account and log in, and allow the APP permissions for BLUETOOTH, LOCATIONS, NOTIFICATIONS, WLAN & CELLULAR DATA.



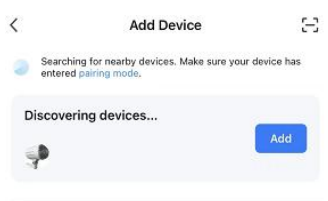
Smart Life App

- 3) In the upper right of the App Home page, select ADD DEVICE (PIC 1), the system will automatically discover the devices (PIC 2), tap to add the device. you will be prompted to enter the Wi-Fi details (PIC 3), please choose the 2.4GHz wifi for your Phone, and enter the wifi password, click NEXT (this step requires your

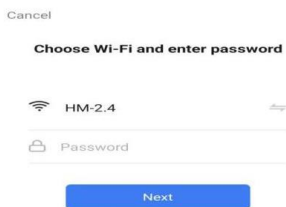
permissions of BLUETOOTH & LOCATIONS access). Then green light of the device control board changes from flashing to steady on, indicating a successful pairing.



PIC 1



PIC 2



PIC 3

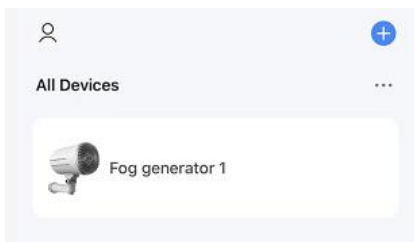


PIC 4

4) When re-pairing the device needed: Power off and restart the device, within the 60s of pairing time, press the remote control 3 times continuously (every interval is 1sec), after the green light flashes, the device can be re-paired again. Please DON'T re-pair the device after 60s of device restart to avoid false smoke triggering.

HOW TO ACTIVATE THE SMOKE ON TUYA APP

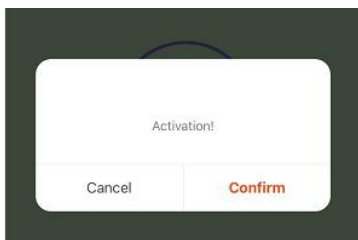
1) On the Home page of the App, select the paired device(PIC 5), (the device can be renamed), tap the ACTIVATE(PIC 6), and confirm again (PIC 7), the smoke will spray immediately(PIC8).



PIC 5



PIC 6



PIC 7



PIC 8

2) You can also create the smart SCENE with all the TUYA supported sensors, alarms, motion detectors, siren, contact sensors, or smart cameras.

AFTER THE GENERATOR BE TRIGGERED, THE SMOKE CONTAINER CAN BE VERY HOT, PLEASE REPLACE IT WHEN IT COOLS DOWN!

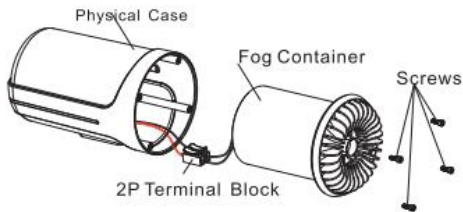
After triggering, the smoke container need to be replaced for future use (Make sure the physical case is fully cool down-normally 2 hours needed). Please check the ORANGE indicator light status on control board before replacement:

- 1) Functional state: the orange light is off.
- 2) Trigger state: if the orange light is on, it indicates that smoke will spray immediately with smoke module cartridge when power on.

When the orange light is off, users can proceed with the related test following the instructions.

Test Before Replace the smoke Cartridge

Test tools: Multi-meter



1. Unplug the power adapter, take out the smoke container, and disconnect the wires from the 2P terminal block, then connect the Multi-meter to the terminal.
2. Set the Multi-meter on DC 12V, plug in the power adapter, Multi-meter reading should remain at 0 volts.(If it displays as 0-12V, please check whether the switch or control board is damaged or not.)
3. Trigger the smoke by Panic button/switch/Remote control/App, the Multi-meter displays 12V. Then test finished.